

## your pet mouse

As a pet is a lifetime of commitment with considerable responsibilities involved, the SPCA requests that preferably the whole family come to view the pet. If you are unsure of the responsibilities involved, please ask a pet care counsellor at the SPCA.

The SPCA shelter is situated at 31 Mount Vernon Road. The adoption shelter is open during the following hours for viewing of animals: Mondays through Wednesdays from 10am to 4pm, Fridays the shelter is open from 10am to 4pm (except the last Friday of every month where the shelter remains open until 8.30pm), Saturdays from 10am to 4pm, Sundays and Public Holidays from 11am to 3.30pm. The adoption shelter is closed on Thursdays (unless it is a Public Holiday where we will remain open).

### {biodata}

Reproductive age = 6-7 weeks

Pregnancy period = 19-21 days

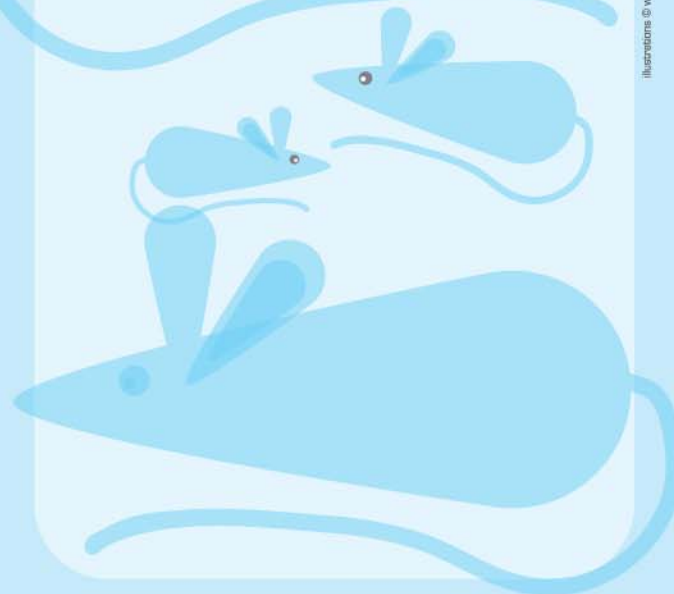
Average litter size = 8-12

Weaning = 3-4 weeks

Life span - 2-3 years



IF YOU DO NOT WANT YOUR MOUSE AND ARE NEGLECTING IT, PLEASE TRY TO FIND AN ALTERNATIVE HOME. DO NOT SET IT FREE IN THE PARKS OR GARDENS; DOMESTICATED PETS CANNOT FEND FOR THEMSELVES.

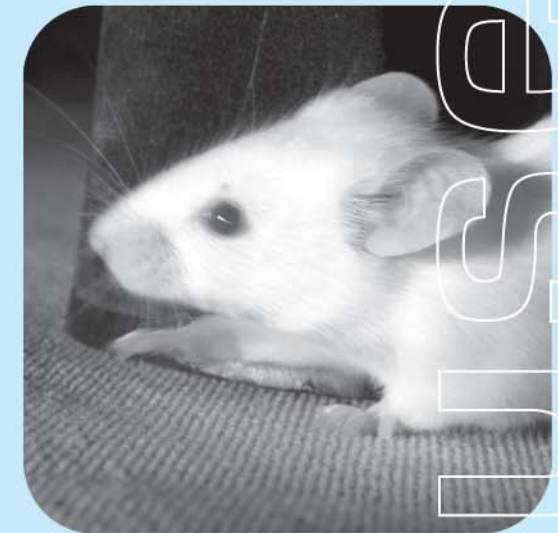


illustrations © www.papeterson.com



Society for the Prevention of Cruelty to Animals  
31 Mount Vernon Road Singapore 368054  
[www.sPCA.org.sg](http://www.sPCA.org.sg)

## responsible ownership



## of the mouse



## your

**{general information}** Mice are friendly, playful and easy to care for. They are intelligent too. It is best to keep the same sex, otherwise there will be numerous young being born. You should handle your mice and hand feed them to keep them tame and happy. Mice are nocturnal animals. Most activities are done at night.

**{handling}** Never handle a mouse by the tip of the tail - the skin might come off causing pain to your pet. Always approach them gently as they may bite if startled. Tame mice will crawl into your hand. If they are not tame, you should hold them at the base of the tail close to their bodies and lift in to your hand. Be extra careful when handling so that your pet does not fall and injure itself. Daily handling is recommended to check on signs of ill-health.

**{environment/living quarters}** Mice are usually kept in cages of plastic or metal, not less than 60 cm long, 30 cm high and 25 cm wide. Keep the cage away from direct sunlight and dark corners. Mice also need a place to hide and sleep such as a box. Mice are good climbers, so ladders and horizontal bars should be provided to allow them to exercise. If a wheel is given, it should be attached to the side of the cage. The floor of the cage should be lined with shredded newspaper or recycled paper. The cage should not be kept near bright lights. The litter corner must be cleaned daily. Bedding should be changed weekly.



## pet

Pine and cedar shavings should not be used in cages as they contain acids that damage the respiratory tract. The cage should also be washed and dried once a week with pet-safe cleaning agents or water/vinegar and rinsed well.

**{food}** You can buy food for your mice from a pet shop. Leafy green vegetables can also be fed along with apples and cheese. If feeding fresh vegetables, it is very important to rinse them first and soak them in water for half an hour (there could be traces of insecticide spray which could harm your pet). Fresh water must be available at all times. A water bottle can be attached to the side of the cage. Feeding bowls etc. must be cleaned daily. Multivitamin drops may be added to the food or water.

**{grooming}** Mice generally groom themselves; you on your part, must ensure that the cage is kept clean.



## mouse

**{health and veterinary care}** Signs of good health: Alert, responsive, rapid movement, good appetite, good clean coat, eyes are clear and bright - no discharge, nose twitches frequently with no discharge, body condition (not thin).

**{ailments}** Small rodents have poor recovery powers. You must therefore keep your pet's environment very clean to prevent your pet from falling sick.

Avoid sudden changes in temperature which may lead to pneumonia.

Ensuring that the food is always fresh will prevent mice from getting stomach upsets.

If your pet is scratching its body often, it could be suffering from skin mites or fungal problems. Consult a veterinarian before the problem gets worse.

A mineral block should be provided to help wear down their constantly growing teeth. You should bring your mouse to the vet for a check up at least once a year. Do not delay treatment if your pet appears unwell.

Try to avoid fighting among the mice. They recover poorly from fight wounds as these wounds get badly infected very quickly and easily.

**{pest control}** Always ensure external environment is clean and free from household pests such as ants and flies.

**{adoption}** For adoption of a mouse from the SPCA, please call 6287 5355 ext. 24.